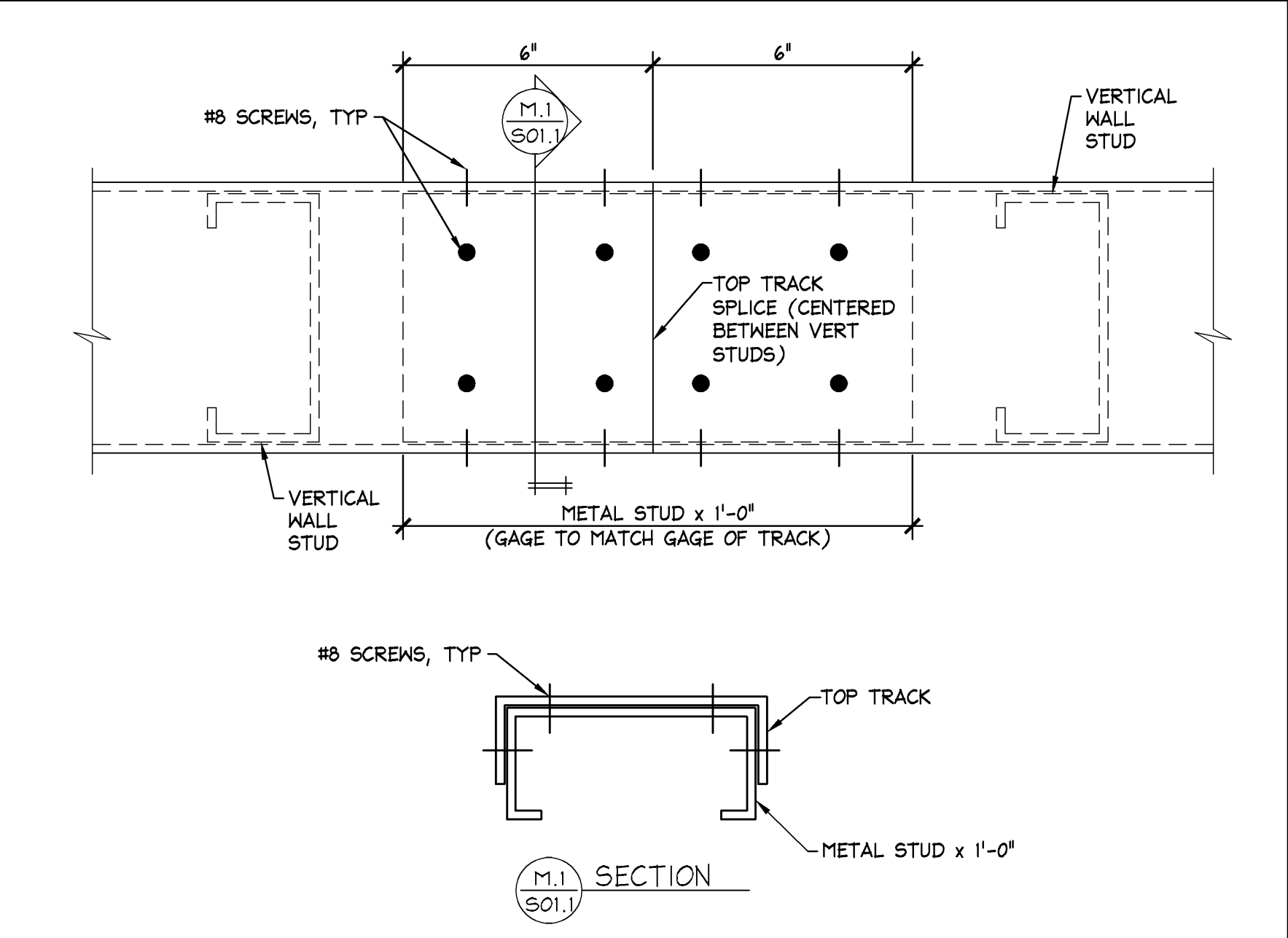


LIGHT GAGE FRAMING - CROSS REFERENCE GUIDE			
MIL. THICKNESS - GAGE NUMBER CROSS REFERENCE			
25 GA. ----- 18 MIL	16 GA. ----- 54 MIL		
GA. ----- 27 MIL	12 GA. ----- 48 MIL		
20 GA. ----- 33 MIL	14 GA. ----- 47 MIL		
18 GA. ----- 43 MIL			
EXAMPLE CROSS REFERENCE:			
3 5/8", 18 GA STRUCTURAL METAL STUD = 362 3 1/2 - 43 METAL STUD			
STUD DEPTH = 3 5/8"	(S=STUD) (T=TRACK) = 3 5/8"	FLANGE WIDTH = 1 1/2"	STUD THICKNESS = 43 MIL (18 GA.)
TYPICAL STRUCTURAL STUDS AND TRACKS			
FORMER STANDARD DESIGNATION		NEW SPSA DESIGNATION (STEEL STUD MANUFACTURERS ASSOCIATION)	
2 1/2", 20 GA. STUD w/ 1 5/8" FLANGE		2505162-33	
2 1/2", 18 GA. STUD w/ 1 5/8" FLANGE		2505162-43	
3 5/8", 20 GA. STUD w/ 1 5/8" FLANGE		3625162-33	
3 5/8", 18 GA. STUD w/ 1 5/8" FLANGE		3625162-43	
6", 20 GA. STUD w/ 1 5/8" FLANGE		6005162-33	
6", 18 GA. STUD w/ 1 5/8" FLANGE		6005162-43	
8", 18 GA. STUD w/ 1 5/8" FLANGE		8005162-43	
8", 16 GA. STUD w/ 1 5/8" FLANGE		8005162-54	
10", 18 GA. STUD w/ 1 5/8" FLANGE		10005162-43	
10", 16 GA. STUD w/ 1 5/8" FLANGE		10005162-54	
12", 16 GA. STUD w/ 1 5/8" FLANGE		12005162-54	
12", 12 GA. STUD w/ 1 5/8" FLANGE		12005162-57	
1 5/8", 22 GA. TRACK w/ 1 1/4" LEG		1621125-27	
1 5/8", 20 GA. TRACK w/ 1 1/4" LEG		1621125-33	
2 1/2", 20 GA. TRACK w/ 1 1/4" LEG		2501125-33	
2 1/2", 18 GA. TRACK w/ 2" LEG		2501200-33	
2 1/2", 18 GA. TRACK w/ 1 1/4" LEG		2501125-43	
2 1/2", 18 GA. TRACK w/ 2" LEG		2501200-43	
3 5/8", 20 GA. TRACK w/ 1 1/4" LEG		3621125-33	
3 5/8", 20 GA. TRACK w/ 2" LEG		3621200-33	
3 5/8", 18 GA. TRACK w/ 1 1/4" LEG		3621125-43	
3 5/8", 18 GA. TRACK w/ 2" LEG		3621200-43	
6", 20 GA. TRACK w/ 1 1/4" LEG		6001125-33	
6", 20 GA. TRACK w/ 2" LEG		6001200-33	
6", 18 GA. TRACK w/ 1 1/4" LEG		6001125-43	
6", 18 GA. TRACK w/ 2" LEG		6001200-43	
TYPICAL HAT (FURRING) CHANNELS			
7/8", 25 GA. FURRING CHANNEL		087F125-18	
7/8", 22 GA. FURRING CHANNEL		087F125-27	
LIGHT GAGE FRAMING SCREW CONNECTIONS			
UNLESS NOTED, LIGHT GAGE FRAMING CONNECTIONS SHALL BE MADE USING #8 SCREWS. SEE DETAIL A/5031 FOR DIAGONAL BRACING CONNECTIONS.			
AT LOCATIONS WHERE SHEATHING MATERIAL IS PLACED AGAINST THE SCREW HEADS OF LIGHT GAGE METAL FRAMING CONNECTIONS, PANCAKE HEAD SCREWS SHALL BE USED SO THAT THE SHEATHING MATERIAL REMAINS STRAIGHT AND SMOOTH.			



TOP TRACK SPLICE	N.T.S.	M
	42DS011MODETL	

CODED NOTES:

- 1 DBL 6" DP, 18 GA BEAM WITH  
3 5/8", 18 GA TRACK TOP &  
BOTTOM
- 2 HSS6x4x1/4 BEAM (ROLLED)
- 3 HSS12x4x1/4 BEAM (ROLLED)
- 4 DBL 12" DP, 12 GA BEAM  
WITH 3 5/8", 12 GA TRACK  
TOP & BOTTOM. (PROVIDE  
14 GA WEB STIFFENER AT  
ALL BEAM BEARING POINTS.  
INSTALL PER  
MANUFACTURER'S  
RECOMMENDATIONS.)
- 5 HSS4x4x1/4 COLUMN
- 6 BUILT-UP BOX COLUMN - DBL 3 5/8" DP,  
18 GA STUDS WITH 3 5/8", 18 GA  
TRACK, EA SIDE. ATTACH BOX COLUMN  
TO BEAM PER DETAIL C/509.1, UNLESS  
NOTED.

## A. CONTROLLING BUILDING CODE 2006 INTERNATIONAL BUILDING CODE

- CONTROLLING BUILDING CODE: 2006 INTERNATIONAL BUILDING CODE  
SEISMIC DESIGN CATEGORY: "A"  
GROUND SNOW LOAD = 0 PSF  
DESIGN ROOF LIVE(SNOW) LOAD = 30 PSF  
DESIGN WIND SPEED = 110 MPH (3 SEC GUST) (PER HOUSTON  
AMENDMENT)  
WIND EXPOSURE CATEGORY = C
- B. LIGHT GAGE FRAMING
1. COLD FORMED STEEL FRAMING SHALL CONFORM TO REQUIREMENTS OF THE LATEST EDITION OF AISI SPECIFICATION FOR DESIGN OF COLD-FORMED STEEL STRUCTURAL MEMBERS.
  2. ALL MEMBERS SHALL BE FORMED FROM CORROSION-RESISTANT STEEL (GRADE 33 UNLESS OTHERWISE SPECIFIED) AND THEN ZINC COATED PER ASTM A653-A4, GRADE G-60.
  3. ALL COLD FORMED MEMBERS SHALL COME FROM A SINGLE MANUFACTURER. JOINTS OR EQUALS FOR ADDITIONAL CONNECTIONS SHALL COMPLY WITH THE MANUFACTURER'S RECOMMENDATIONS.
  4. UNLESS NOTED, TRACK GAGE SHALL EQUAL STUD GAGE AND TRACK FLANGE WIDTH SHALL EQUAL 1 1/4" DEEP LEG TRACK WITH 2" FLANGE WIDTH SHALL BE USED WHERE NOTED ON DRAWINGS.
  5. SEE DETAIL R/SO1 FOR LIGHT GAGE METAL FRAMING DESIGNATIONS.
  6. BASE TRACKS SHALL BE SET ON SMOOTH AND LEVEL CONCRETE OR NON-SHRINK GROUT SUCH AS "MASTERFLOW 713" BY MASTER BUILDERS.
  7. FASTENING OF COMPONENTS SHALL WITH SELF-DRILLING CADMIUM PLATED OR ZINC COATED SCREWS (UNLESS NOTED). SCREWS SHALL BE OF SUFFICIENT SIZE TO ENSURE THE STRENGTH OF THE CONNECTION.
- SEE DETAIL R/SO1 FOR ADDITIONAL SCREW REQUIREMENTS.
8. SPLICES IN FRAMING COMPONENTS OTHER THAN BOTTOM WALL TRACK ARE NOT PERMITTED, EXCEPT AS SPECIFICALLY DETAILED IN STRUCTURAL DRAWINGS. SEE DETAIL R/SO1 FOR TOP TRACK SPLICE DETAIL.
  9. STUDS SHALL BE INSTALLED SO THE ENDS ARE POSITIONED AGAINST THE END OF THE RAILING. PRIOR TO FASTENING, STUDS SHALL BE ATTACHED TO BOTH FLANGES OF THE UPPER AND LOWER RAILING TRACKS WITH (1)-#8 SCREW IN EACH FLANGE OF EACH STUD, UNLESS NOTED.

### C. STRUCTURAL STEEL

1. STRUCTURAL STEEL SHALL CONFORM TO THE AISC "SPECIFICATIONS FOR THE DESIGN, FABRICATION AND ERECTION OF STRUCTURAL STEEL FOR BUILDINGS", LATEST EDITION.
2. WELDED CONNECTIONS SHALL CONFORM TO THE LATEST REVISED CODE OF THE AMERICAN WELDING SOCIETY, AWS D1.01. WELDING ELECTRODES SHALL BE E70XX, LOW HYDROGEN.
3. STRUCTURAL STEEL ANGLES, PLATES, ETC., SHALL CONFORM TO THE REQUIREMENTS OF ASTM A36, FY = 36 KSI.

LIGHT GAGE METAL FRAMING	--
	--

CODED NOTES	--	L
	--	

STRUCTURAL SPECIFICATIONS	--	C
	--	

<b>STUD DESIGNATION</b>	<b>STUD DEPTH</b>	<b>FLANGE WIDTH</b>	<b>STUD GAUGE</b>	<b>STUD SPACING</b>	<b>MAXIMUM WALL HEIGHT SPANNING FROM FLOOR TO DECK</b>
3625162-33	3 5/8"	1 5/8"	20	16"	22'-0"
3625162-43	3 5/8"	1 5/8"	18	16"	25'-0"
3625162-54	3 5/8"	1 5/8"	16	16"	28'-0"
6005162-33	6"	1 5/8"	20	16"	30'-0"
6005162-43	6"	1 5/8"	18	16"	35'-0"
6005162-54	6"	1 5/8"	16	16"	38'-0"

<p align="center"><b>TABLE 2</b></p> <p align="center"><b>STUD SIZE MATRIX FOR UNIT 1 &amp; UNIT 5 CABINET WALLS</b></p>	
<p align="center"><b>SEISMIC DESIGN CATEGORIES A, B &amp; C.</b></p>	
<p>FULL HEIGHT VERTICAL STUDS SHALL BE 3 5/8", 20 GA STUDS (WITH 1 5/8" FLANGE) @ 16" O.C. MAX. INSTALL DIAGONAL BRACING AT APPROXIMATELY 11'-0" A.F.F. AS SHOWN IN THESE SECTIONS</p>	

<p align="center"><b>TABLE 3</b></p> <p align="center"><b><u>STUD SIZE MATRIX FOR PARTITIONS THAT LATERALLY</u></b>  <b><u>SUPPORT FLOOR MOUNTED STOCKROOM SHELVING</u></b></p>	
<p align="center"><b><u>SEISMIC DESIGN CATEGORIES A, B &amp; C.</u></b></p>	
<p align="center"><b>SEE DRAWING S03.2</b></p>	

**NOTE: FOR ALL THREE TABLES ABOVE, AT LOCATIONS WHERE SHELVING OCCURS ON EACH SIDE OF A SINGLE STUD WALL, REDUCE THE STUD SPACING SHOWN IN THE TABLES ABOVE BY ONE-HALF, AND REDUCE THE DIAGONAL SPACING SHOWN IN DETAIL A/S03.1 BY ONE-HALF.**

NOTES:

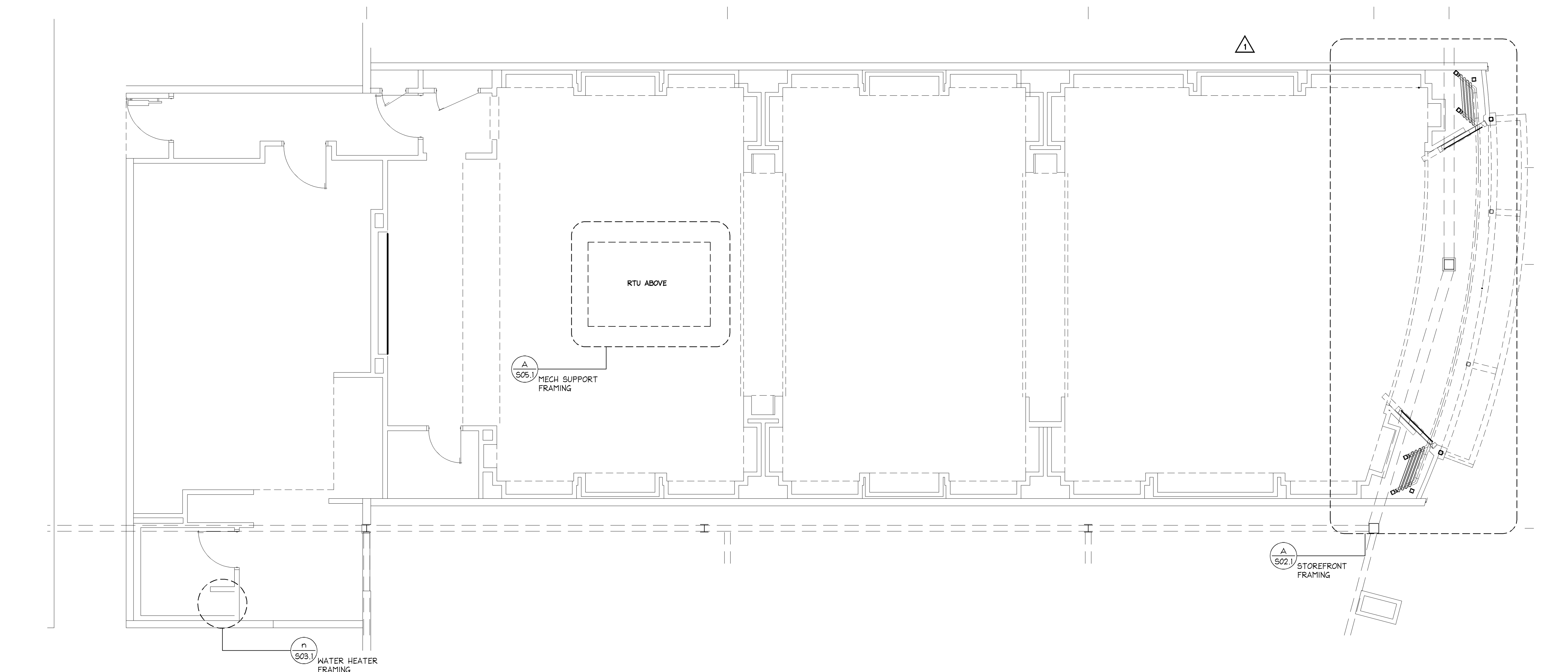
1. DESIGN BASED ON ALLOWABLE DEFLECTION OF L/200.
2. DESIGN BASED ON  $F_y = 33 \text{ KSI}$  FOR  $3 \text{ 5/8" } 4 \text{ 6" STUDS LESS THAN } 16 \text{ GAUGE.}$   
 $F_y = 50 \text{ KSI FOR } 3 \text{ 5/8" } 16 \text{ GAUGE.}$
3. PROVIDE HORIZONTAL BRIDGING @  $5'-0" \text{ O.C. MAX. INSTALL PER MANUFACTURER'S RECOMMENDATION}$
4. DESIGN BASED ON MINIMUM  $5 \text{ PSF LATERAL LOAD, OR LATERAL SEISMIC LOAD, WHICHEVER CONTROLS.}$
5. TABLE IS VALID FOR UP TO (2) LAYERS OF  $5/8" \text{ THK GYPSUM BOARD ON EACH SIDE OF METAL S}$

### SEISMIC DESIGN CATEGORIES A, B & C.

STUD SIZE MATRIX	NONE
	42DA121NOMATX

STUD SIZE MATRIX	NONE
	42DA121NOMATX

## LOCATION PLAN



**MOODY•NOLAN**  
responsive architecture

300 Spruce Street Phone: (614) 461-4664  
Suite 300 Fax: (614) 280-8881  
Columbus, Ohio 43215 [www.moodynolan.com](http://www.moodynolan.com)

PAUL J FORD AND COMPANY  
250 EAST BROAD STREET  
SUITE 600  
COLUMBUS, OHIO 43215  
614-221-6679  
A26613-0012

CORPORATE REGISTRATION  
No. F-002728

CORPORATE REGISTRATION  
No. F-002728

Limited brands

LIMITED STORE PLANNING, INC.  
d/b/a STORE DESIGN & CONSTRUCTION  
Three Limited Parkway • Columbus, Ohio 43230  
Telephone: 614.415.7000 • Fax: 614.415.7349

[illegible]

PROJECT INFORMATION: **024200396**

**BATH & BODY WORKS**

**MEMORIAL CITY MALL**

303 MEMORIAL CITY WAY

SUITE 733

HOUSTON, TX 77024

SCOPE: RELO DWN / NEW / PACKAGE: 1

DESIGN TYPE: EASTON—G GENERATION: 1415q

LSO&C PROJECT #: 60885 A/E PROJECT #: 13643

REVISIONS:		
REQUIRED BY:		DATE
1	STOREFRONT REVISION - REV 1	6/10/2014
2	REVISION 2 - LL / PERMIT COMMENTS	6/27/2014
3	FIELD DIRECTIVE 1	07/05/2014
4	REVISION 3 - PERMIT COMMENTS	07/21/2014
5	REVISION 4 - STOREFRONT	07/21/2014

DATE ISSUED: 04/11/2014  
DESIGNED BY: SLH  
DRAWN BY: RLA  
CHECKED BY: GDK

## STRUCTURAL SPECIFICATIONS AND NOTES

**DRAWING NUMBER:**

# S01.1